

Punchbowl Public School Project update | March 2026

Image caption: Completed Block N from the new entry



Investing in our schools

As part of the NSW Government's plan to rebuild public education, the NSW Budget is delivering \$3.9 billion for new and upgraded schools in Western Sydney. This targeted investment will ensure growing communities get access to a world class public education.

Project overview

A project to upgrade Punchbowl Public School includes a new 2 storey building facing Rossmore Avenue and refurbishment work to the existing administration building.

The new building (Block N) was completed in July 2025 and the refurbishments to Building A, which included adding a permanent support learning unit, is now finished and in use by students and staff.

Progress summary

The remaining 2 demountable classrooms have been safely decommissioned in preparation for their removal in the April 2026 school holidays. Please see more information about this work below.

Next steps

- Removal of 2 demountable classrooms during the April 2026 school holidays.
- Make good works to the playground where the demountable classrooms were located.
- Install screening to the Block N external staircases in Term 2 2026.

Upcoming demountable removal – from Tuesday 7 April 2026

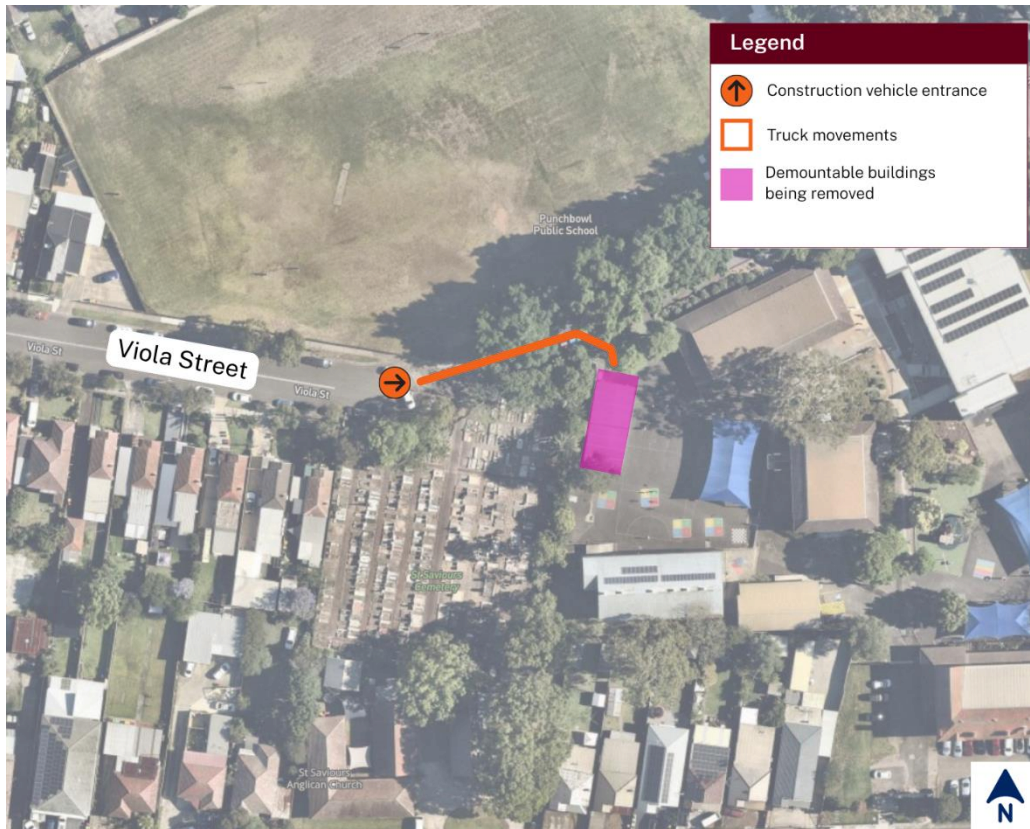
Construction vehicles will enter and exit the site via Viola Street and a mobile crane will be used to safely load the demountables on trucks. Traffic control will be in place as needed to ensure the safety of the community.

These works will start on Tuesday 7 April 2026 and are expected to be complete by Monday 13 April 2026. All works will take place between 7 am and 5 pm, Monday to Friday. No work will take place on weekends or public holidays.



Email: schoolinfrastructure@det.nsw.edu.au
Phone: 1300 482 651
schoolinfrastructure.nsw.gov.au

Truck movements



Thank you for your cooperation during this important work.

More information



You can find more information about the project at edu.nsw.link/PunchbowlPSupgrade or by scanning the QR code.

If you have any questions about this project, you can contact School Infrastructure during business hours on the contact details below.



For a **Translation and Interpreting Service** call **131 450** and ask them to phone the NSW Department of Education - School Infrastructure on **1300 482 651**.