

Beyond Enrol School Holiday Program

ssoshc@beyondenrolcare.com.au

ST SIMONS THE APOSTLE PRIMARY SCHOOL

7:00am - 6:00pm / 0478 746 473

Book Now! limited places available!

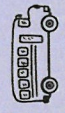





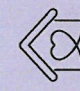

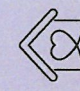
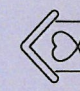
Upon signing this booking form, I acknowledge that I have read and understood the vacation care program information which includes cost information. This is available via email as well as in the Xplor home - messages tab which can be found in the account section. Further details as per primary enrolment form. Please ensure that all details are current, especially health details, contact details and custody details. A full enrolment/re-enrolment form is required if this is the first time your child will be using the service this year. The enrolment is completed online and takes no longer than 5-10 minutes! [Click on link to enrol](#). Please fill out the table below to make a booking:

Parent/Guardian Name:

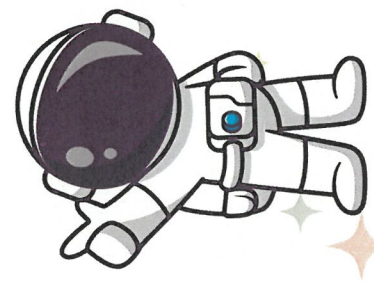
Parent/Guardian Signature:

Date:

Week

Name of Child/dren:	Monday	Tuesday	Wednesday	Thursday	Friday
					
					

please 

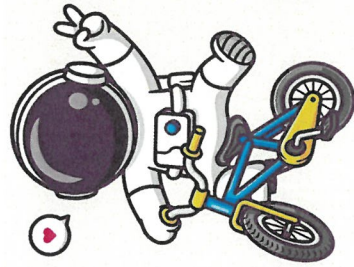


1 2

 Excursion

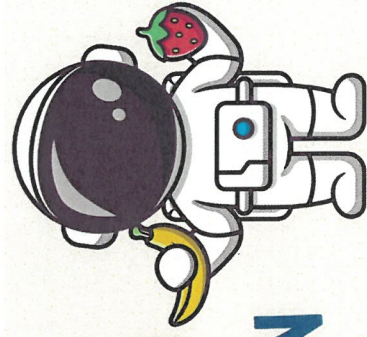
 Home day

 Incursion



BEYOND

CARE



SCHOOL HOLIDAY PROGRAM INFORMATION

Location

2 Taylors Lane, Rowville, VIC 3178 - OSHC Rooms are located at the top of the school next to the oval and sand pit. There is a gate that leads down steps to give you direct access to the rooms.

Booking / Enrolment Procedure

Children must be enrolled in the program before a booking can be made. Please ensure all information is up to date, particularly health, contact, and custody details.

To organise enrolment, contact our admin team by phone at 0478 746 473 or email ssoshc@beyondeducare.com.au.

Booking Conditions

- Bookings will only be processed once enrolment is complete and full payment has been received.
- Families who are not linked with the Child Care Subsidy (CCS) will be charged the full fee. The subsidy will be applied once the link is confirmed via Centrelink.

Cost

Standard / Early Bird Fees (applied at the discretion of management within a designated time frame):

- Home Day: \$85 per child, per day (approx. \$8.50 with max CCS*)
- Incursion Day: \$105 per child, per day (approx. \$10.50 with max CCS*)
- Excursion Day: \$115 per child, per day (approx. \$11.50 with max CCS*)

Casual Fees:

- Home Day: \$90 per child, per day (approx. \$9.00 with max CCS*)
- Incursion Day: \$110 per child, per day (approx. \$11.00 with max CCS*)
- Excursion Day: \$120 per child, per day (approx. \$12.00 with max CCS*)

*CCS amounts depend on your approved percentage through Centrelink (MyGov). Learn more at Child Care Subsidy - Services Australia.

Payments

The primary parent (linked to CCS) must register for our auto-debit system via Xplor. For families new to our program or those using it only during holidays, bank details for direct deposit can be provided upon request. However, ongoing use of the program requires auto-debit registration.

Refunds / Credits

- No refunds will be issued for changes or cancellations made after the last day of term.
- Credits may be issued for illness-related absences at management's discretion, provided a valid medical certificate is submitted.
- To apply for a credit, contact our office on 0478 746 473 for an application form.
- Credits will not be issued due to changes in personal circumstances.
- Cancellations made in the week prior to the start of the program will incur a cancellation fee.
- No refunds or credits will be given for cancellations after the last day of term.

Important Note

The viability of each program day is subject to minimum enrolments. If a session is cancelled due to low numbers, families will be notified in advance.
Program hours: 7:00am - 6:00pm (subject to change without notice).

What to Bring Each Day

- Arrival Time: Please ensure your child arrives by 9:00am on all incursions and excursion days.
- Food: Pack adequate food for the day, including lunch. A drink bottle is essential (drink taps are available).
- Provided Meals: We offer breakfast, morning tea, and afternoon tea daily, including seasonal fruits, vegetables, crackers, and toast with a variety of spreads. Our OSHC menu is displayed at the service.
- Food Handling: Due to Food Safety Regulations, staff cannot heat or cook food brought from home.
- Clothing: Dress your child appropriately for the weather and planned activities.
 - Sunscreen (applied before arrival)
 - Wide-brimmed hat
 - Closed-toe shoes are required for safety
- Personal Items:
 - Toys and electronics from home are welcome at your own risk. Staff are not responsible for lost or damaged items.
 - Please label all personal belongings clearly.
- Allergy Awareness:
 - Do not bring any nut or egg products.
 - Avoid sending any food that requires heating or reheating.

Excursion & Incursion Safety

Risk assessments are conducted for all excursions and incursions. Copies are available on request. Parent/Guardian Authorisation

By enrolling in the School Holiday Program, I acknowledge and agree to the following:

- I authorise my child/ren to participate in the program, including any incursions and excursions booked.
- I accept the program rules and conditions, and release Beyond Educare and its staff from liability for accidents or property loss during my child's attendance.
- I authorise staff to obtain necessary medical assistance in the case of illness or injury and accept responsibility for any related costs.
- I agree to inform staff of any absence and understand that my child must not attend if unwell or suffering from a contagious condition. If my child becomes ill or injured, I or an authorised person will collect them promptly.
- I understand that if my child's behaviour is deemed inappropriate and behaviour guidance procedures have been followed, I may be asked to collect my child. Ongoing attendance may require further discussion.

Parent/Guardian Declaration - In signing the booking form you confirm that:

- All details on the enrolment form (mine and my child's) are correct.
- I have agreed to the session times and days of care.
- I am aware of my responsibility to pay all associated fees, which may change over time with notice and agreement.
- I am aware that children with anaphylaxis attend the program and will not send food containing allergens noted in other children's Action Plans. We strongly encourage families to avoid packing nut or egg products.