

PARENT INFORMATION SESSION

1:1 TECHNOLOGY
PROGRAM



1:1 TECHNOLOGY PROGRAM

What is a 1:1 Technology Program?

- 1:1 means students bring their own device to school everyday
- Parents are requested to supply devices for their own children.

Why did we start a 1:1 Technology Program?

Preparing student for High School and equipping them with the required skills needed when entering secondary school.

Preparing students for NAPLAN online, or any other testing that may go online in the future.



Ensuring students are meeting the required ICT capabilities as outlined in the WA Curriculum.

Students need to be ready for a future where technology rapidly evolves and creates ongoing transformation in workplaces and job roles.



PREPARING STUDENTS FOR HIGH SCHOOL

- Efficient typing skills, complemented by a strong grasp of Microsoft Office Suites, particularly Word, for creating and editing documents.
- Proficiency in online research, including the ability to effectively search the internet for information.
- Competence in document management, encompassing the skill to name, save, and easily retrieve files when needed.
- Knowledge and responsible practice in device care, including the essential habit of nightly charging to ensure readiness for the next school day.



[Home](#) [Our School](#) [Parents & Community](#) [Student Hub](#) [Forms](#) [Plans & Policies](#) [Contact Us](#)

- ▶ School Overview
- ▶ 2023 Booklist
- ▶ 1:1 Technology Program
- ▶ Our Values
- ▶ School Map
- ▶ Principal's Address
- ▶ School Hours
- ▶ School & Local Intake Area
- ▶ Annual Report
- ▶ Contributions and Charges
- ▶ School Uniform (external provision)
- ▶ School Charity
- ▶ School Chaplain
- ▶ School Psychologist
- ▶ Our Staff
- ▶ Student Leadership
- ▶ Term Planner

Our School - 1:1 Technology Program

Under the Western Australian Curriculum, it is expected that students learn to use technology effectively and appropriately to access, create and communicate information and ideas, solve problems and work collaboratively in all learning areas at school.

Implementing a 1:1 Technology Program will allow our teachers to individualise learning, which can increase independence and self-initiated learning in students, and extend their learning beyond the classroom.


[Why implement a 1:1 Technology Program?](#)

[Why iPads?](#)

[IPADS: TOP 10 THINGS YOU NEED TO KNOW](#)

[Device Management](#)

[Glengarry PS iPad Guidelines](#)



[Contact Us](#)

STUDENT PARTICIPATION

- Room 5: 96% of students are bringing their own device to school
- Room 6: 96% of students are bringing their own device to school
- Room 12: 96% of students are bringing their own device to school
- Room 11: 85% of students are bringing their own device to school
- Room 9 (Year 5 only): 100% of students are bringing their own device to school

SCHOOL INVESTMENT 2022-2023

- 1** Leasing additional 30 iPads: \$14,421.00
Additional charging station for leased iPads: \$1346.15
Installation of charging station: \$195.00
- 2** Jamf configuration \$3105.00
JAMF Licenses: \$1026.00
- 3** Apple TV x6: \$1140.00
- 4** 2 Years of NEXT Learning: \$30,800.00

TOTAL SCHOOL INVESTMENT: \$52,033.15

Two young students, a girl with red hair on the left and a girl with dark hair on the right, are sitting on a brick wall. They are both wearing red polo shirts with a school crest that says 'GLENGARRY PRIMARY SCHOOL'. The girl on the left is holding a tablet with a light blue sticky note attached to it. The girl on the right is also holding a tablet with a light blue sticky note. The text 'CLASS EXAMPLES' is overlaid in the center in large white letters.

CLASS EXAMPLES

FREQUENTLY ASKED QUESTIONS

Teacher Interaction

Literacy and Numeracy are top priorities at Glengarry PS. The iPad will enhance and extend these skills, providing learning opportunities that students cannot access through traditional methods. Students will use their iPads for learning.

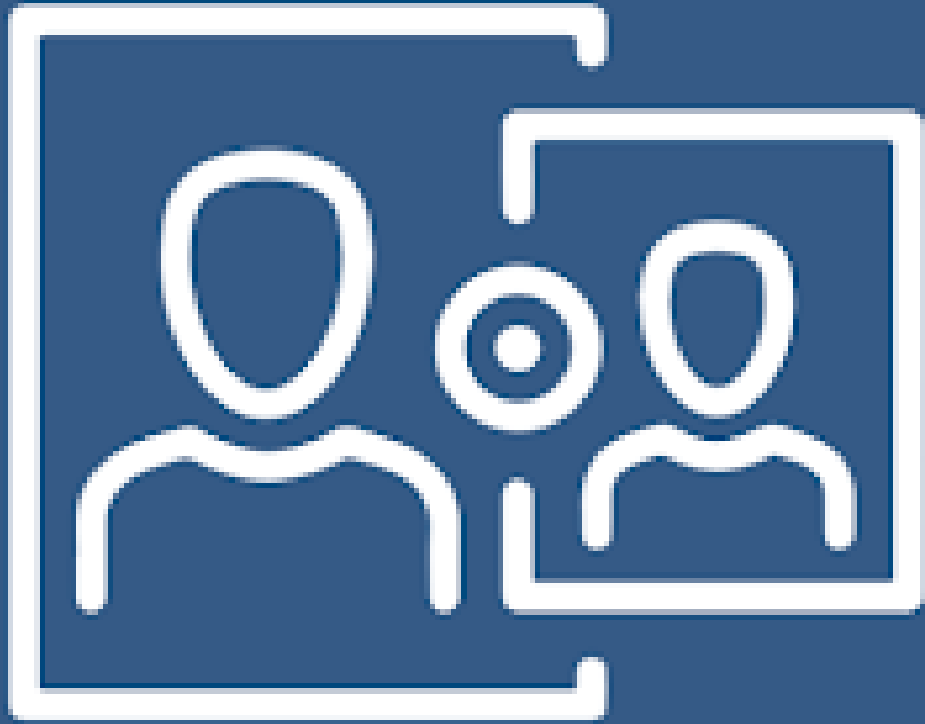


FREQUENTLY ASKED QUESTIONS

Screen Time

Students will have a fair distribution of activities in the classroom. Teachers will ensure planning includes break in lesson and active learning opportunities. Students will be taught about mindful usage of devices which includes recognising balance and utilising varied digital and non-digital tools to demonstrate their learning.





JAMF PARENT

FREQUENTLY ASKED QUESTIONS

Insurance/Breakages

Your iPad is not covered for damage or loss by the school of the Education Department's insurance policy. You should check your home and/or contents insurer. If you are purchasing a new device, you may wish to consider AppleCare for extra cover.

Teachers will manage the use of the iPad in their classroom. Student will not be able to access their iPad during lunch or recess without supervision.



DEVICE MANAGEMENT

To manage a productive 1:1 Technology Program at Glengarry Primary School, a Mobile Device Management (MDM) program will need to be installed on all student owned devices. This means parents will **not** be able to install their own apps onto devices, instead the iPads will be school managed.



IPAD RECOMMENDATIONS

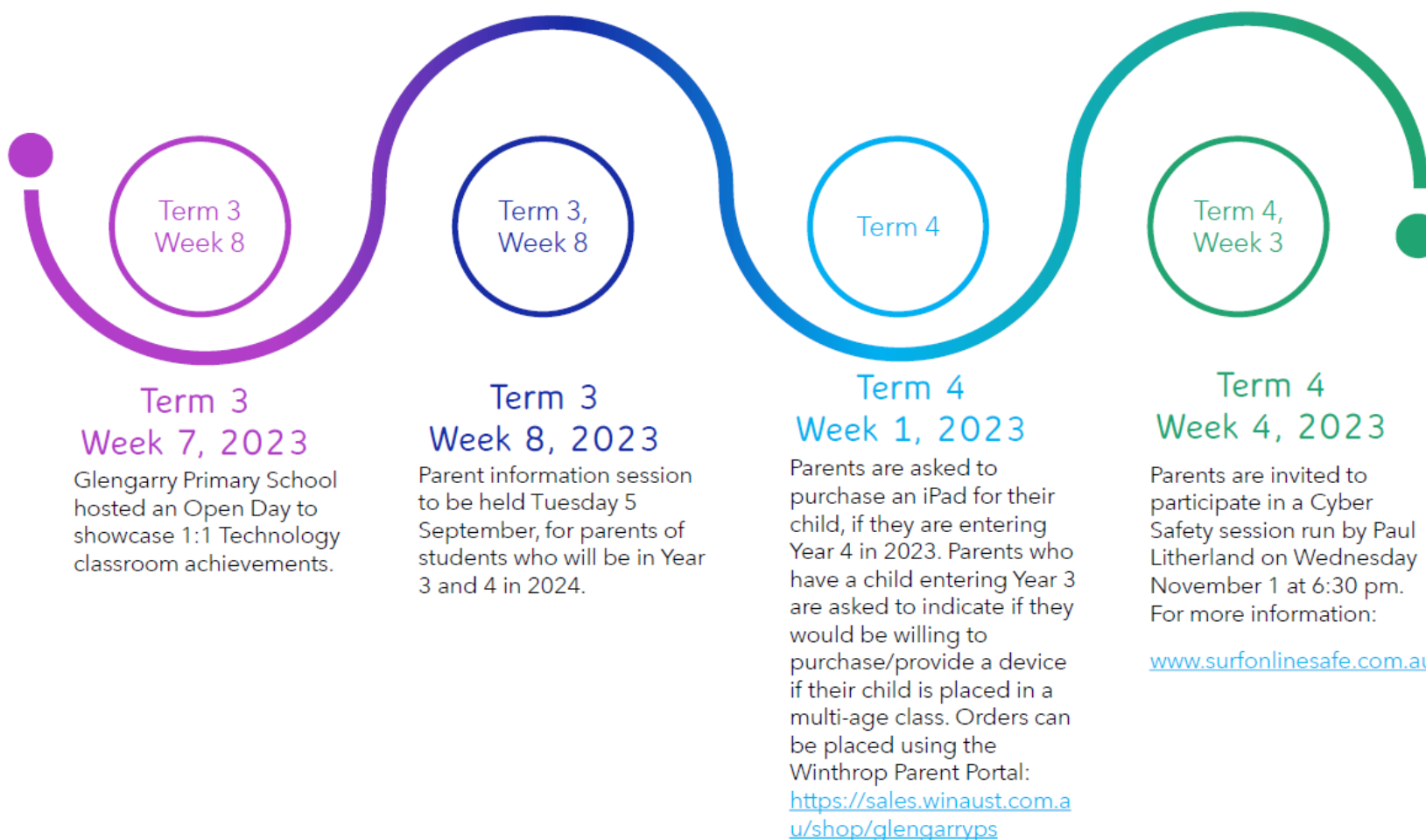
Requirements: To ensure compatibility with the school system & classroom needs, we recommend the following devices:

- iPad (10th Gen)
- iPad (9th Gen - recommended)
- iPad (8th Gen)

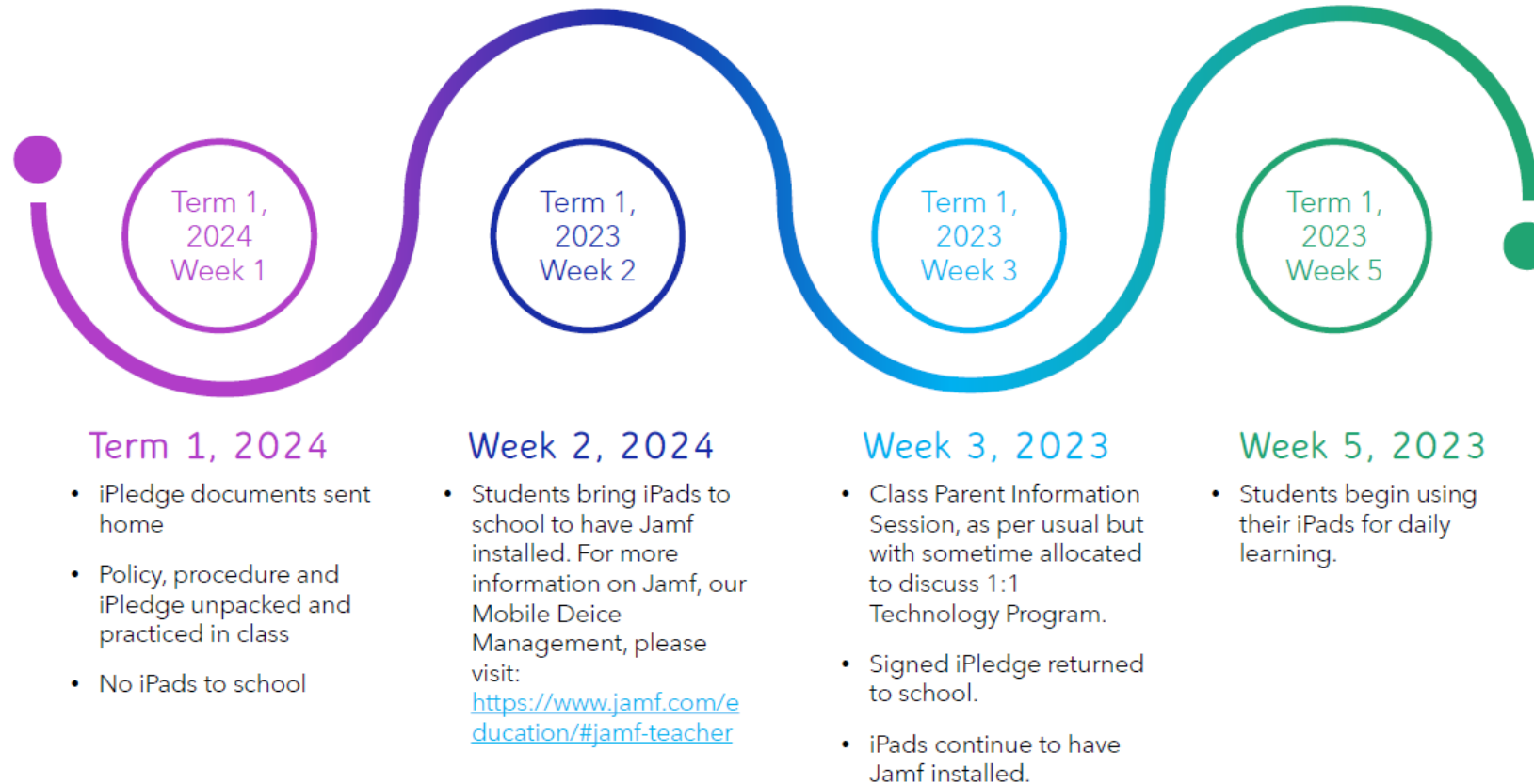
The student iPad must run iOS 16 as a minimum requirement, and have a minimum of 64gb storage.

Keyboard also required (not Bluetooth) and a stylus pen.

1:1 TECHNOLOGY TIMELINE 2023



1:1 TECHNOLOGY TIMELINE 2024





QUESTIONS?