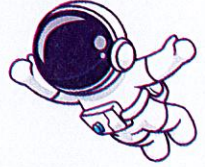


BEYOND EDUCARE

ST JOHN THE BAPTIST PRIMARY SCHOOL OSHC

WE CAN'T WAIT TO GET STARTED!



https://prodadmin.myxplor.com/enrollment_v2/centre/7HCuJwoRPCOT87tvNUZCEQ

Please use the enrolment link above to sign up for the program and provide your details. Don't worry if some information is missed during the process — our team can always follow up later to ensure everything is complete. Once your enrolment is visible on our end, our coordinator will reach out to answer any questions you may have and introduce you to our team and philosophy.

This is a wonderful opportunity to get to know our educators and learn about our center's approach. Whenever possible, we love to organize a tour of the service and meet our families face-to-face.

If you have any questions or need assistance before finalizing your enrolment, please don't hesitate to contact our coordinator using the details provided in this document. We're here to support you every step of the way!

BECOME PART OF THE FAMILY

This marks the beginning of a wonderful partnership, and we couldn't be more excited to become a part of your school's family.

At Beyond Educare, we pride ourselves on providing high-quality OSHC services that are more than just care — they're an opportunity for children to grow, learn, and thrive in a safe, supportive, and engaging environment. Our experienced team is committed to creating programs tailored to your children's interests, needs, and development.

We value collaboration and connection, which is why we are looking forward to building a lasting relationship with the St John the Baptist community. Together, we aim to create a space where children feel inspired, families feel supported, and everyone can enjoy the benefits of a truly caring community.

We are confident this partnership will positively impact not only your family but the broader school community as well. From our engaging programs to our emphasis on communication and transparency, we're here to ensure a smooth start for everyone involved.

If you have any questions or would like to learn more about what we offer, please don't hesitate to reach out. We can't wait to meet you and your children and begin this exciting journey together! Information relating to the program, OSHC menu, educators as well as pupil free day programs will be shared this week!

ADMIN@BEYONDEDUCARE.COM.AU / 0478 746 424



BEYOND EDUCARE

ST JOHN THE BAPTIST PRIMARY SCHOOL OSHC

HOW TO GET STARTED!

https://prodadmin.myxplor.com/enrollment_v2/centre/7HCuJwoRPCOT87tvNUZCEO

Please note the above enrolment link, where families can sign up to the program, providing all of your details. Any information that is missed can always be followed up with at a later date so there is nothing to worry about! Once we can see the enrolment on our end our coordinator will reach out to answer any questions you may have and to introduce you to our team and philosophy. This is a great opportunity to familiarize yourself with our educators and center approach. Where possible we love to organise a tour of the service and meet our families face to face. Please feel free to contact our coordinator at any time, even before finalizing your enrolment, using the details provided in this document. We are here to help every step of the way!

PROGRAM

Our OSHC program is built around open-ended play experiences and activities designed to enrich both social and life skills. We emphasize the importance of play for all children and actively encourage their input, as well as feedback from families, to shape the program. Two core qualities we focus on are service and resilience.

Our programs align with the nationally approved learning framework for school-age care, My Time, Our Place. This framework reflects the integrated and complex well-being, development, and learning of all children. It fosters meaningful conversations and provides a common language about children's play and learning, benefiting children, families, educators, and the broader community.

Throughout the term, we organize activities based on goals derived from the national framework. However, we also embrace spontaneity, allowing children to lead and adapt the program based on their interests. This flexible approach ensures that the program remains dynamic and tailored to the children's needs, all while maintaining our goal of learning through fun.

We recognize the importance of routine and consistency for children, so we apply a structured approach to our day-to-day management. Our junior and senior helpers, nominated by their peers, take on leadership roles by demonstrating our core values and positively impacting the community. Every child has the opportunity to serve as a helper, fostering a sense of responsibility and leadership.

Each morning and afternoon, children can take on leadership roles during breakfast or afternoon tea, as well as participate in our group chats/yarning circles. These discussions offer a meaningful platform for children to share their thoughts and ideas. During these sessions, we also say our school prayer, acknowledge the traditional custodians of the land, discuss our random acts of kindness for the day, as well as share our educator and child shoutouts. These activities build self-esteem and provide children with a sense of agency.

OUR TEAM

At Beyond Educare, we deeply value our educators, understanding the vital role they play within the community. The relationships and friendships we build with schools allow us to have a meaningful and lasting impact on children's lives.

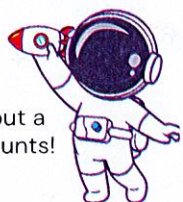
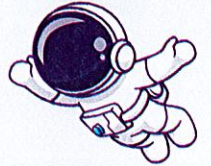
All of our educators go through a intricate process when joining the team with them predominantly being highly qualified, either holding or working towards Diploma, Bachelor, or Master-level teaching qualifications.

Their dedication to the children and families in our care is evident through the strong relationships they form. In fact, many of our former students return after graduating, eager to join our team—testament to the lasting connections we create. We will also send out our educator profiles that will be shared through the school so you can meet the team!

CONTACT INFORMATION

Please reach out at any time! We are here to help every step of the way. We will also be able to send out a comprehensive family handbook that also includes information about healthy eating, bookings and accounts!

phone: 0478 746 424 / email: admin@beyondeducare.com.au



BEYOND EDUCARE

ST JOHN THE BAPTIST PRIMARY SCHOOL OSHC

HOW TO GET STARTED!

https://prodadmin.myxplor.com/enrollment_v2/centre/7HCuJwoRPCOT87tvNUZCEO

Please use the enrolment link above to sign up for the program and provide your details. Don't worry if some information is missed during the process — our team can always follow up later to ensure everything is complete. Once your enrolment is visible on our end, our coordinator will reach out to answer any questions you may have and introduce you to our team and philosophy.

This is a wonderful opportunity to get to know our educators and learn about our center's approach. Whenever possible, we love to organize a tour of the service and meet our families face-to-face.

If you have any questions or need assistance before finalizing your enrolment, please don't hesitate to contact our coordinator using the details provided in this document. We're here to support you every step of the way!

OUR TIME AT OSHC!

Arriving to Before School Care with a nutritious breakfast available as well as activities both structured and spontaneous!

When arriving to After School Care children will place bags in a designated area, wash their hands and then enjoy a varied afternoon tea which includes their favourite fruits, vegetables and snacks!

After enjoying afternoon tea, children will have time to socialise and enjoy free play. We then gather for 'Group Chat' or a 'Yarning Circle' which has everyone sitting together to discuss the days organised activities, the fortnightly program, children sharing in announcements and anything they feel that is important to them! We also take the time to share Random Acts of Kindness for the day along with shoutouts to children and Educators! (Shoutouts will be shared with families)

We want children to feel a sense of agency and want them to be at the helm of the program - so after engaging in meaningful conversation during Group Chat we then provide the space and opportunity for them to engage in their chosen activities.

